



FIA CEZ Cross-Country Rally Championship
MNASZ M1Flotta Hungarian Cross-Country Rally Championship
PZM Cross-Country Rally Championship
MAMS International Open Baja Cup, with International Participants

Pápoc / HUN
09-11.05.2024.



Date:	2024.05.08.	Time	12:00
Subject:	Bulletin No. 1	Doc. nr.:	1
From:	Organizer	Page:	15
To:	All Moto+Quad Competitors	Attachment	

1.3 Overall SS distance and total distance of the Itinerary: Listed in the attached itinerary.

2.4 Officials

Chief Medical Officer: 2024.05.10. Friday: Dr. Bertók Csaba
2024.05.11. Saturday: Dr. Németh László
Dr. Géczi Attila
Chief Safety Officer: ~~Németh Sándor~~ replaced by Balogh László

3. Program

PROGRAM	Helyszín/Place	Dátum/Date	Idő/Time
Versenyiroda / Sajtóiroda nyit	Idősek Klubja, Pápoc, Vásár út 37.	2024.05.10	7:00
Adminisztratív átvétel	BEOSZTÁS SZERINT!		07:15-11:00
Biztonsági berendezések, GPS			
Technikai átvétel	Tűzoltószerter, Pápoc, Vásár út 37. BEOSZTÁS SZERINT!		07:30-10:30
Parc Fermé beállítás	Művelődési Ház, Pápoc, Rába utca 8.		10:30-12:00
Első Felügyelőtestületi ülés	Idősek Klubja, Pápoc, Vásár út 37.		12:00
Versenyzői eligazítás, Road Book osztás	Művelődési Ház, Pápoc, Rába utca 8.		12:45
Rajtlista kifüggesztése	Sportity		
Verseny kezdete – 1. Napi szakasz rajtja / Rajtceremónia	Művelődési Ház, Pápoc, Rába utca 8.		13:30
Prologue Start			13:45
Szervíz	Idősek Klubja, Vásár út 37.		14:02
Gyűjtő/regrouping	Művelődési Ház, Pápoc, Rába utca 8.		15:12
SS1 Start			15:40
Szervíz	Idősek Klubja, Vásár út 37.		16:12
Gyűjtő/regrouping	Művelődési Ház, Pápoc, Rába utca 8.		17:17
SS2 Start			17:30
1.Napi szakasz cél / Parc Fermé	Művelődési Ház, Pápoc, Rába utca 8.		19:02
2.Napi Rajtlista kifüggesztése			20:00
2.Napi szakasz rajtja	Művelődési Ház, Pápoc, Rába utca 8.	2024.05.11	9:15
SS3 Start	Pápoc, Lánka Patak		9:25
Szervíz	Idősek Klubja, Vásár út 37.		10:10
SS4 Start	Pápoc, Lánka Patak		11:15
Szervíz	Idősek Klubja, Vásár út 37.		12:00
Gyűjtő/regrouping	Művelődési Ház, Pápoc, Rába utca 8.		13:00
SS5 Start	Pápoc, Lánka Patak		13:40
Szervíz	Idősek Klubja, Vásár út 37.		14:26
SS6 Start	Pápoc, Lánka Patak		15:36
Verseny Célja / Parc Fermé	Művelődési Ház, Pápoc, Rába utca 8.		16:27
Végellenőrzés (Jury)	Tűzoltószerter, Pápoc, Vásár út 37.		közvetlen a célba érkezés után.
Ideiglenes végeredmény kifüggesztés			18:30
Végeredmény kifüggesztése	Sportity	19:00	
Díjkiosztó Ceremónia	Művelődési Ház, Pápoc, Rába utca 8.	19:00	



FIA CEZ Cross-Country Rally Championship
MNASZ M1Flotta Hungarian Cross-Country Rally Championship
PZM Cross-Country Rally Championship
MAMS International Open Baja Cup, with International Participants

Pápóc / HUN
09-11.05.2024.



3.4.2. To be payed on site

Due to a force majeure issue the GPS provider changed to GEOTRAQ, the new provider has a different deposit policy.

GPS + Overtake system deposit: **80.000, - Ft / 200 €**

Installation manual attached to this document.

11.6. Service

Service is only permitted after the Service Zone start board and before the Service Zone finish board. Those are marked in the Road book and at the location as well.

In case of any Service park, there is **no time control** check created, before and after the service Zone. Outside of these areas only the riders still in the competition can service their own and each other's vehicle.

In case of Service „A” and „C”, there is no time control check created, before and after the service Zone.

In case of service „B”, „D”, „E” and „F” only **Service Out Time control** check is created.

Competitors, who already completed ASS2,ASS6, may pass by the TC1A, TC5A time control. For them this TC is no longer operational and cannot be interpreted as a re-entry.

11.10:Fixed Penalties

Competitors, who can't complete a Section for any reason (getting lost, technical problem, etc.) but capable of arriving their vehicle to the regrouping, beginning of the next section until the start time of the 1st competitor (according to the timetable) or on the park fermé in at the end of the leg, the following penalties are applied:

SS Not finished in the Maximum time and having taken the start SS

- Maximum time +1 Hour

SS Not Started

- Maximum Time+ 2 hour

The specified penalty can only be used once on race days.

On Friday, 2024.05.10. competitor(s) who have not completed a selective stage may enter the Park Fermé and continue the competition on Saturday, 2024.05.11.

19. Additional Information

11 Speed Control Zones:

- The start and the finish of the Speed Control Zones with the maximum speed is listed in the Road Book.
- Speed Control Zone Penalties: 1st. occasion 5 min, 2nd. occasion 10 min, every other occasion 15 min.

The Official Itinerary is that shown in the road book and defined by drawings. The itinerary and the road direction diagrams in the road book must be followed.

Should a competitor leave the route, he must retrace his tracks and return to that point before continuing. Failure to do so will incur a penalty of 15 minutes which may be increased at the discretion of the Jury.

We kindly remind the competitors that the maximum speed is (130 Km/h) of the groups, which is checked by the GPS and the corresponding penalty is imposed by the Clerk of the Course, based on Tereprallye Sport Regulation Appendix 4.



FIA CEZ Cross-Country Rally Championship
MNASZ M1Flotta Hungarian Cross-Country Rally Championship
PZM Cross-Country Rally Championship
MAMS International Open Baja Cup, with International Participants

Pápc / HUN
09-11.05.2024.



Appendix 1: ITEMS AT THE ORGANISERS' DISCRETION

Teams will be allowed to enter the Riverside Baja Service and the event area only after passing through the **Registration Point** and picking up their **entry permits, a sufficient amount of service stickers and the Check List**.

Registration point location:

Pápc, Y junction in front of the Senior's Club (HQ)
<https://maps.app.goo.gl/7WnD5ishs7sVpaQs7>

Opening hours of the Registration Point:

05.09. Thursday:	10:00-21:00
05.10. Friday:	6:00-12:00

It is **MANDATORY** to stick the Service Sticker on the inside of the front windscreen!

The amount of Service Stickers documented on the Check List must be paid at the Administrative Checks and the Check List must be handed over to the event staff at the scrutineering and at the Parc Fermé entrance. There are no assigned spaces in the Service Area, but we kindly ask everyone to reserve only the size of space ordered and to take into account the needs and requests of their fellow competitors!

The map below shows the Registration point (green house icon) and the boundaries of the Service Area:





FIA CEZ Cross-Country Rally Championship
 MNASZ M1Flotta Hungarian Cross-Country Rally Championship
 PZM Cross-Country Rally Championship
 MAMS International Open Baja Cup, with International Participants

Pápc / HUN
 09-11.05.2024.



Appendix 2: Itinerary



RIVERSIDE BAJA 2024



Stage 1								2024.05.10. PÉNTEK / FRIDAY	
Sunrise		5:21				20:15		Sunset	
IE/TC	Location	SS Maximum Time	SS Km	Liasion Km	Total Km	Target Time	1st vehicle Due		
SS									
TC0A	Parc Fermé OUT, Podium/Rajtceremónia						13:30	Section 1	
TC0B	Pápc			4,21	4,21	0:10	13:40		
DSS P	START - PROLÓG					0:05	13:45		
ASS P	FINISH - PROLÓG	0:30	20,03		24,24	(0:17)	(14:02)		
	Pápc						(Expected time of arrival)		
SERVICE / SZERVIZ A (70')									
TC0C	Gyűjtőállomás BE / Regrouping IN			2,24	26,48	1:10	15:12	Section 2	
	Gyűjtőállomás / Regrouping								
TC0D	Gyűjtőállomás KI / Regrouping OUT						15:30		
TC1	Pápc			1,28	27,76	0:05	15:35		
DSS 1	START - PÁPOC / 1					0:05	15:40	Section 3	
ASS 1	FINISH - PÁPOC	0:45	37,88		65,64	(0:32)	(16:12)		
	Pápc						(Expected time of arrival)		
SERVICE / SZERVIZ B (60')									
TC1A	Szerviz KI / Service OUT			0,23	65,87	1:00	17:12	Section 3	
TC1B	Gyűjtőállomás BE / Regrouping IN			0,48	66,35	0:05	17:17		
	Gyűjtőállomás / Regrouping								
TC1C	Gyűjtőállomás KI / Regrouping OUT						17:20		
TC2	Pápc			1,28	67,63	0:05	17:25	Section 3	
DSS 2	START - PÁPOC / 2					0:05	17:30		
ASS 2	FINISH - PÁPOC	0:45	37,88		105,51	(0:32)	(18:02)		
	Pápc						(Expected time of arrival)		
SERVICE / SZERVIZ C (60')									
TC2A	Parc-Ferme BE / Parc-Ferme IN			0,72	106,23	1:00	19:02		
Day Total			95,79	10,44	106,23				
			90,17%	9,83%	100%				
			SS km	Liasion km	Total km				



FIA CEZ Cross-Country Rally Championship
 MNASZ M1Flotta Hungarian Cross-Country Rally Championship
 PZM Cross-Country Rally Championship
 MAMS International Open Baja Cup, with International Participants

Pápc / HUN
 09-11.05.2024.



RIVERSIDE BAJA 2024

MOTO



Stage 2								2024.05.11. SZOMBAT / SATURDAY	
Sunrise 5:19								20:16 Sunset	
IE/TC	Location	SS Maximum Time	SS Km	Liasion Km	Total Km	Target Time	1st vehicle Due		
SS									
TC2B	Parc Fermé OUT,						9:15	Section 4	
TC3	Pápc			1,28	1,28	0:05	9:20		
DSS 3	START - PÁPC / 3					0:05	9:25	Section 4	
ASS 3	FINISH - PÁPC	1:00	53,30		54,58	(0:45)	(10:10)		
	Pápc						(Expected time of arrival)		
SERVICE / SZERVIZ D (55')									
TC3A	Szerviz KI / Service OUT			1,75	56,33	0:55	11:05	Section 4	
TC4	Pápc			1,45	57,78	0:05	11:10		
DSS 4	START - PÁPC / 4					0:05	11:15	Section 4	
ASS 4	FINISH - PÁPC	1:00	53,30		111,08	(0:45)	(12:00)		
	Pápc						(Expected time of arrival)		
SERVICE / SZERVIZ E (55')									
TC4A	Szerviz KI / Service OUT			1,75	112,83	0:55	12:55	Section 4	
TC4B	Gyűjtőállomás BE / Regrouping IN			0,48	113,31	0:05	13:00		
Gyűjtőállomás / Regrouping									
TC4C	Gyűjtőállomás KI / Regrouping OUT						13:30	Section 5	
TC5	Pápc			1,28	114,59	0:05	13:35		
DSS 5	START - PÁPC / 5					0:05	13:40	Section 5	
ASS 5	FINISH - PÁPC	1:00	53,83		168,42	(0:46)	(14:26)		
	Pápc						(Expected time of arrival)		
SERVICE / SZERVIZ F (60')									
TC5A	Szerviz KI / Service OUT			0,23	168,65	1:00	15:26	Section 5	
TC6	Pápc			1,45	170,10	0:05	15:31		
DSS 6	START - PÁPC / 6					0:05	15:36	Section 5	
ASS 6	FINISH - PÁPC	1:00	53,83		223,93	(0:46)	(16:22)		
	Pápc						(Expected time of arrival)		
TC6A	Pápc			0,72	224,65	0:05	16:27		
Day Total			214,26	10,39	224,65				
			95,38%	4,82%	100%				
			SS km	Liasion km	Total km				



FIA CEZ Cross-Country Rally Championship
 MNASZ M1Flotta Hungarian Cross-Country Rally Championship
 PZM Cross-Country Rally Championship
 MAMS International Open Baja Cup, with International Participants



Pápoc / HUN
 09-11.05.2024.

Appendix 3: Roadbook Signs

TRACKS		CONTROL		SYMBOLS		SYMBOLS		CAPS	
	TARMAC ROAD		START SELECTIVE SECTION		FENCE		PETROL STATION & TYPE OF FUEL	180	EXIT CAP
	TRACK PISTE		ARRIVAL SELECTIVE SECTION		BARBED WIRE		MONUMENT	180_A	AVERAGE CAP
	OFF TRACK (HP)		CHECK POINT		RAIL ROAD		ANIMALS INDIVIDUAL	180_C	CAP CALCULATED (Only HP)
	LOW VISIBLE TRACK/TRACES		START / FINISH NEUTRALISATION		HOLE		ANIMALS	OBLIC	CAP THAT TURNS
P	TRACK PISTE		START NEUTRALISATION WITH SPEED LIMIT		COLLAPSE, DITCH, RAVINE, ETC.		CAIRN	ABBREVIATIONS	
PP	PRINCIPAL TRACK/PISTE		START / FINISH NEUTRALISATION TRANSFER		RUTS		ROCKS	VG	VEGETATION
RO	ROAD		START TRANSFER WITH SPEED LIMIT		TWISTY /SINUOUS		MOUNTAIN	L/R	LEFT AND RIGHT
P//	PARALLEL TRACK/PISTE	T:25	NEUTRALISATION / TRANSFER TIME MAX. ALLOWED		BUMPY BROKEN		TREE	R/L	RIGHT AND LEFT
HP	OFF TRACK (SIGHT DRIVING)		WAITING FOR RESTART		BUMPY		PALM TREE	onL	ON LEFT
HP	OFF TRACK FORBIDDEN		STOP FOR RESTART		LATERAL INCLINATION		CAMEL GRASS	onR	ON RIGHT
FPP	FOLLOW PRINCIPAL TRACK/PISTE		FUEL ZONE CATER. ALLOWED TO FUEL		POST		VEGETATION	kpL	KEEP TO THE LEFT
FRO	FOLLOW ROAD		TIME CONTROL		ELECTRIC POLE		SLOPE	kpR	KEEP TO THE RIGHT
SA	SANDY		ASSISTANCE SERVICE		ELECTRIC LINE		SMALL WADI	kpS	KEEP STRAIGHT
GV	GRAVEL		TYRE MARKING ZONE		HIGH VOLTAGE TOWER		LARGE WADI	-√	LESS VISIBLE
SAFETY			END ZONE		ANTENNA		SANDY WADI	+√	MORE/LESS VISIBLE
	DANGER LEVEL 1	ON TRACK			WELL		RIVER (WATER)	EMP	
	DANGER LEVEL 2		BUMP		TANKS		LAKE /PUDDLE	/	DURING
	DANGER LEVEL 3		DIP HOLE		BARRELS		PLAIN /CHOTT	IN	IN INTO
	GLOBAL DANGER IN THE NOTE		COMPRESSION		CONCRETE ELEMENTS		TOWARDS /DIRECTION	ET	AND / NEXT
	START SPEED LIMIT		DITCH		TIRES		ROAD WORKS	A	AT
	FINISH SPEED LIMIT		SUMMIT		SIGN POSTS		RESET /RECAL TRIP	CX	STONE
	STOP		ABOVE BRIDGE		RESTRICTED /PROTECTED AREA		DISTANCE	E3	NARROW
	CAUTION		UNDER BRIDGE		BUILDINGS /HOUSES		DUNES / SAND	Q^T	QUIT / LEAVE
25.25	RED LINE UNDER KM-DANGER 2 IN THE NOTE		STEP UP		CHURCH /MOSQUE		SANDY PLAIN	TJS	ALWAYS
WAYPOINTS			STEP DOWN		RUINE /ABANDONED		BIG BOWL "CUVETTE"	NBX	MANY
	HIDDEN WP		UP HILL /DOWN HILL		FORT /CASTLE		SAND SPIT	IMP	IMPERATIVE
	CONTROL WP		CUT DANGER		CEMETERY		DUNE	EFF	COLLAPSED
	SECURITY WP		RIGHT or LEFT OVER CREST		VILLAGE		DUNE BROKEN	ORN	RUTS
	NAVIGATION WP		FENCE GATE		BIVOUAC		DUNES	BAD	BAD
	PRECISE WP		FENCE WITH CATTLE GATE		TUNNEL		DUNES	RP	REJOIN
	VISIBLE WP		WALL GATE		PIPELINE	DN	DUNE	BTW	BETWEEN
	ECLIPSED WP		WADING /WATER CROSS		WALL	DNX	MANY DUNES		MODIFICATION FROM OPENING CAR
	WAYPOINT NUMBER		CONCRETE PASS		CAMP	DNT	SMALL DUNE "DUNETTE"	NEW NOTE	NEW NOTE FROM OPENING CAR
						L1 L2 L3	DUNES DIFFICULTY LEVEL	BIG	BIG SMALL FOLLOW
								WRITTEN	WRITTEN AS TEXT (ENGLISH-0)



FIA CEZ Cross-Country Rally Championship
MNASZ M1Flotta Hungarian Cross-Country Rally Championship
PZM Cross-Country Rally Championship
MAMS International Open Baja Cup, with International Participants

Pápc / HUN
09-11.05.2024.



Appendix 4: GPS Installation Guide

RALLY SAFETY SYSTEM – SELF-INSTALLATION MANUAL
© GEOTRAQ



RALLY SAFETY SYSTEM

QUICK SELF - INSTALLATION MANUAL

(ENDURO + ATV)

**FOLLOW THE INFORMATION BELOW ON HOW
TO INSTALL THE SYSTEM BEFORE GOING TO SCRUTINEERING**

Version released on 06.02.2024

Page 1 of 9

STEP 1 – GET FAMILIAR WITH THE SYSTEM COMPONENTS

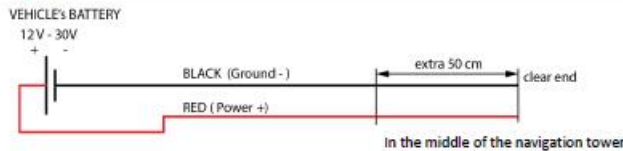


NOTE: If needed we can provide an additional extension cable to place the radio antenna on a better position.

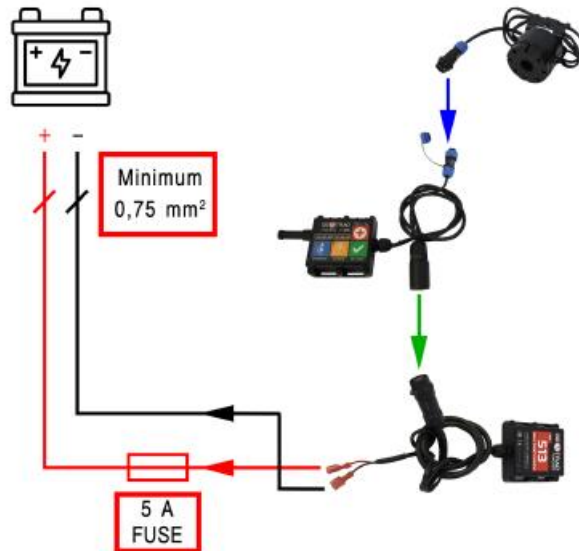
- **IMPORTANT! NO CUTTING OF CABLES, MODIFICATION OF CONNECTORS OR OTHER INTERFERENCE IN THE SYSTEM COMPONENTS IS ALLOWED! ANY DAMAGE TO THE EQUIPMENT MUST BE PAID ACCORDING TO THE GEOTRAQ PARTS LIST!**

STEP 2 – PREPARE POSITIVE AND NEGATIVE CABLE FROM THE BATTERY TO THE NAVIGATION TOWER AND INSTALL INSULATED TERMINAL CONNECTORS (ONLY THOSE SUPPLIED BY THE ORGANISATION)

- **IMPORTANT! THE BATTERY MASTER CUT-OFF (KILL) SWITCH MUST NOT DISCONNECT THE POWER SUPPLY FOR THE RALLY SAFETY SYSTEM.**
- It is the responsibility of the competitors alone to provide, **DIRECT POWER SUPPLY** from the vehicle's battery according to the drawings provided.
- The power cables **MUST** be "flexible" (multi wire), insulated cables – 2 x min 0.75 to max 1.25 mm² (WITH RED for positive (+) wire and BLACK for negative (-) wire insulation color).
- The connection **MUST** have an IN-LINE FUSE - "BLADE TYPE" of 5A.



STEP 3 – MOUNTING THE SYSTEM - OVERVIEW



Overview of the system connections.

- You will receive two 6,3 mm female quick plug terminals for the power connection. **If you have old terminals, discard them and use the provided new ones!**

- IMPORTANT! USE ONLY THE PROVIDED QUICK PLUG TERMINALS! DO NOT USE YOUR OWN!**
- IMPORTANT! USE PROPER TOOLS TO CRIMP THEM!**



Proper tools for crimping.



FIA CEZ Cross-Country Rally Championship
MNASZ M1Flotta Hungarian Cross-Country Rally Championship
PZM Cross-Country Rally Championship
MAMS International Open Baja Cup, with International Participants

Pápoc / HUN
09-11.05.2024.



STEP 4 – MOUNT THE GPS TRACKER ON THE PROPER POSITION

- For ENDURO the best position is at the navigation tower or the top end of the suspension forks.
- For ATV the best position is at the navigation tower or the area around the head light

- **IMPORTANT! THE GPS TRACKER MUST HAVE VISIBILITY TO THE SKY (NO METAL ON TOP OF THE DEVICE)**
- **IMPORTANT! INSTALLATION IS DONE WITH CABLE TIES THROUGH THE HOLES OF THE BASE OF THE DEVICE**
- **IMPORTANT! POSITION THE DEVICE IN SUCH A WAY THAT NO DIRECT DAMAGE CAN BE DONE!**



Installation of the GPS TRACKER on the suspension fork using cable ties.

STEP 5 – MOUNT THE COM-BOX MOUNTING BRACKET AND INSERT THE COM-BOX UNIT ON THE PROPER POSITION

- You can bolt the mounting bracket as shown in the graphic below, or you can use cable ties to fix it to a central location on the navigation tower or to the handle bar.

- **IMPORTANT! THE COM-BOX MUST BE IN REACH OF THE DRIVER TO OPERATE THE BUTTONS!**
- **IMPORTANT! ENSURE THERE IS SUFFICIENT SPACE (MINIMUM 6 cm) AT THE SIDE OF THE UNIT TO ENABLE THE ANTENNA TO BE FITTED AND SLIDE THE UNIT INTO THE BRACKET!**



FIA CEZ Cross-Country Rally Championship
 MNASZ M1Flotta Hungarian Cross-Country Rally Championship
 PZM Cross-Country Rally Championship
 MAMS International Open Baja Cup, with International Participants

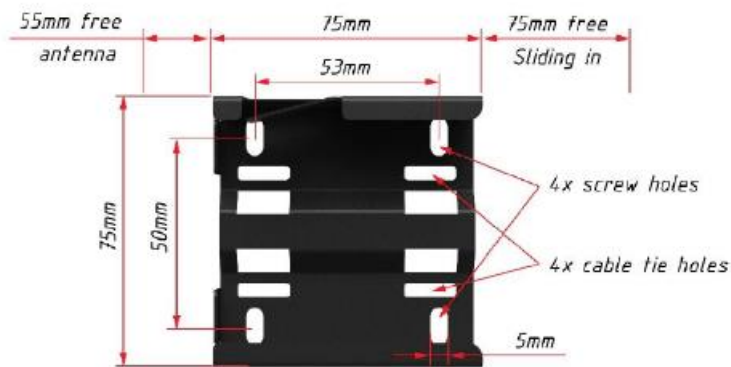
Pápac / HUN
 09-11.05.2024.



RALLY SAFETY SYSTEM – SELF-INSTALLATION MANUAL
 © GEOTRAQ



Installation of the Com-Box unit with bracket on the handle bar using cable ties.





FIA CEZ Cross-Country Rally Championship
 MNASZ M1Flotta Hungarian Cross-Country Rally Championship
 PZM Cross-Country Rally Championship
 MAMS International Open Baja Cup, with International Participants

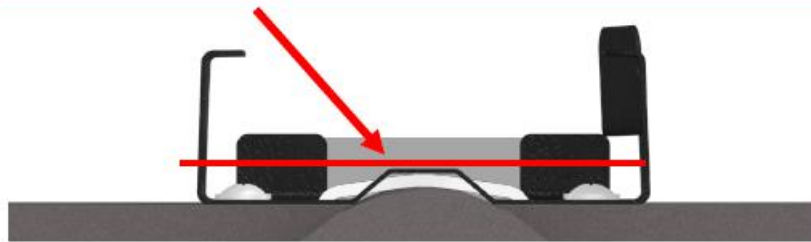


Pápc / HUN
 09-11.05.2024.

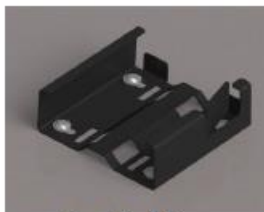
RALLY SAFETY SYSTEM – SELF-INSTALLATION MANUAL
 © GEOTRAQ



IMPORTANT! No bolt/screw heads or cable/zip ties can protrude over the red line as marked below.



Cable / zip tie fixture



Screw / bolt fixture



Com-Box unit installed in bracket



FIA CEZ Cross-Country Rally Championship
MNASZ M1Flotta Hungarian Cross-Country Rally Championship
PZM Cross-Country Rally Championship
MAMS International Open Baja Cup, with International Participants

Pápoc / HUN
09-11.05.2024.



RALLY SAFETY SYSTEM – SELF-INSTALLATION MANUAL
© GEOTRAQ

- When the mounting bracket is securely installed, you can slide-in the Com-Box unit in.
- When slid in you MUST lock the device in place by pushing the top locking mechanism.



- **IMPORTANT! THE ANTENNA NEEDS AT LEAST 55mm ON ALL SIDES TO WORK PROPERLY! MAKE SURE NOT TO PLACE IT RIGHT NEXT TO OTHER METAL COMPONENTS!**

STEP 6 – CHECK THE STATUS OF THE RALLY SAFETY SYSTEM.

- First, make sure the antenna is connected (optional extension cable and antenna)
- Second, check the blue connectors (buzzer) are tight
- Third, check the connection of the black connectors between the GPS Tracker and the Com-Box unit
- Finally check the connection of the 2 power terminals (positive and negative)

- **IMPORTANT! WHEN CONNECTING THE POWER TERMINAL MAKE SURE YOU HAVE THE PROPER POLARITY – RED is POSITIVE, BLACK is NEGATIVE!**
- **IMPORTANT! IF ALL THE COMPONENTS ARE CONNECTED PROPERLY, THE COM-BOX UNIT WILL DISPLAY A “GREEN STATUS” ON THE BATTERY ICON AND “BLUE/GREEN STATUS” on the RADIO ICON**

STEP 7 – FINAL INSPECTION AT SCRUTINEERING

- Install the cables loosely using only a few cable ties and in such a way that they can be clearly checked at scrutineering.
- Only after you receive APPROVAL from the Scrutineer and/or the GPS Technician, you can fully fasten the cables onto the vehicle using cable ties. DO NOT overuse cable ties!
- DO NOT use insulating or any other tape to group the cables.

- **IMPORTANT! DO NOT PLACE THE CABLES FOR THE SYSTEM IN DIFFICULT OR HIDDEN PLACES (INSIDE THE NAVIGATION CONSOLE OR HARD TO REACH LOCATIONS). THE INSTALLATION WILL BE CHECKED TO ENSURE THE SYSTEM AND ADDITIONAL COMPONENTS ARE PROPERLY INSTALLED AND OPERATIONAL AT SCRUTINEERING AND IF REQUIRED, YOU WILL NEED TO REROUTE THE WIRING.**

STEP 8 – WATCH THE VIDEO OF HOW TO USE THE SYSTEM



FIA CEZ Cross-Country Rally Championship
MNASZ M1Flotta Hungarian Cross-Country Rally Championship
PZM Cross-Country Rally Championship
MAMS International Open Baja Cup, with International Participants

Pápac / HUN
09-11.05.2024.



BATTERY STATUS

- - EXTERNAL POWER
- - NO EXTERNAL POWER
- - (BLINKING) INT. BATTERY EMPTY

RADIO STATUS

- - RADIO OK
- - SLEEP MODE, NO RADIO

OVERTAKE FUNCTION

DANGER BEACON



EMERGENCY SOS BEACON

- PRESS AND HOLD UNTIL ACTIVATED

CONFIRM / QUIT BUTTON

- On the following link, you can learn how to operate with the Com-Box:

<https://www.youtube.com/watch?v=6hSXuu6DcyE>





FIA CEZ Cross-Country Rally Championship
 MNASZ M1Flotta Hungarian Cross-Country Rally Championship
 PZM Cross-Country Rally Championship
 MAMS International Open Baja Cup, with International Participants

Pápoc / HUN
 09-11.05.2024.



RALLY SAFETY SYSTEM – SELF-INSTALLATION MANUAL
 © GEOTRAQ



STEP 9 – RETURNING THE SYSTEM

When it's time for you to return the system from your vehicle you **MUST** do this in the following order:

- First disconnect the negative (-) wire, then disconnect the positive (+) wire from the cable from your vehicle's battery at the female quick connect terminals.
- Second disconnect the COM-BOX - TRACKER cable
- Third disconnect the Buzzer – COM-BOX cable

• **IMPORTANT! WHEN YOU RETURN THE SYSTEM TO THE GPS DESK, YOUR EQUIPMENT WILL BE CHECKED FOR DAMAGE & DEFECTS AND IF FOUND – YOU WILL BE REQUIRED TO PAY FOR THE DAMAGE TO THE EQUIPMENT ACCORDING TO THE GEOTRAQ PARTS LIST!**